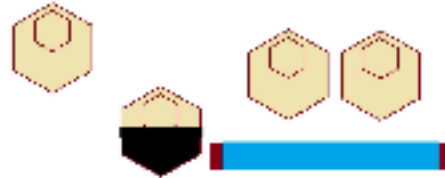


# 1. Kaninhålet Yttre



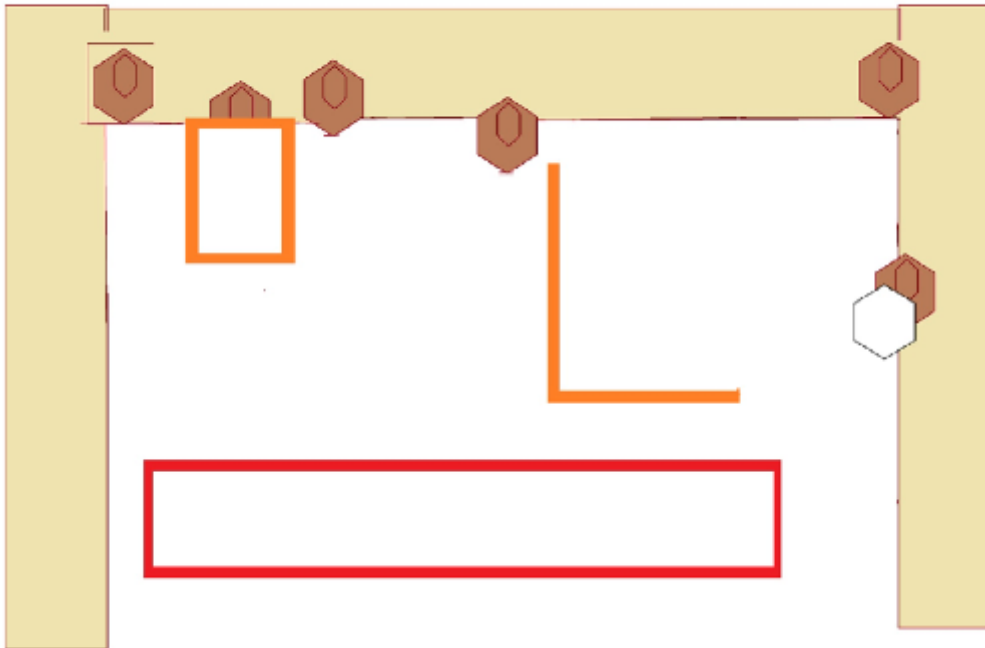
|         |                          |            |       |
|---------|--------------------------|------------|-------|
| CoF     | Comstock - Short         | Points     | 40 p  |
| Targets | 4 paper, Total 4 targets | Min rounds | 8     |
| Firearm | Handgun                  | Match-%    | 5.56% |

|                         |   |
|-------------------------|---|
| Procedure               | On signal - Engage! Blue net - Softcover. |
| Starting position       | Standing                                  |
| Firearm ready condition |   |
| Start on                | Audible signal                            |
| Stop on                 | Last shot                                 |
| Penalties               |   |
| Safety angles           | Shown by RO                               |
| Setup notes             |   |

## 2. Kaninhålet Inre

Stage 2

Kaninhålet B



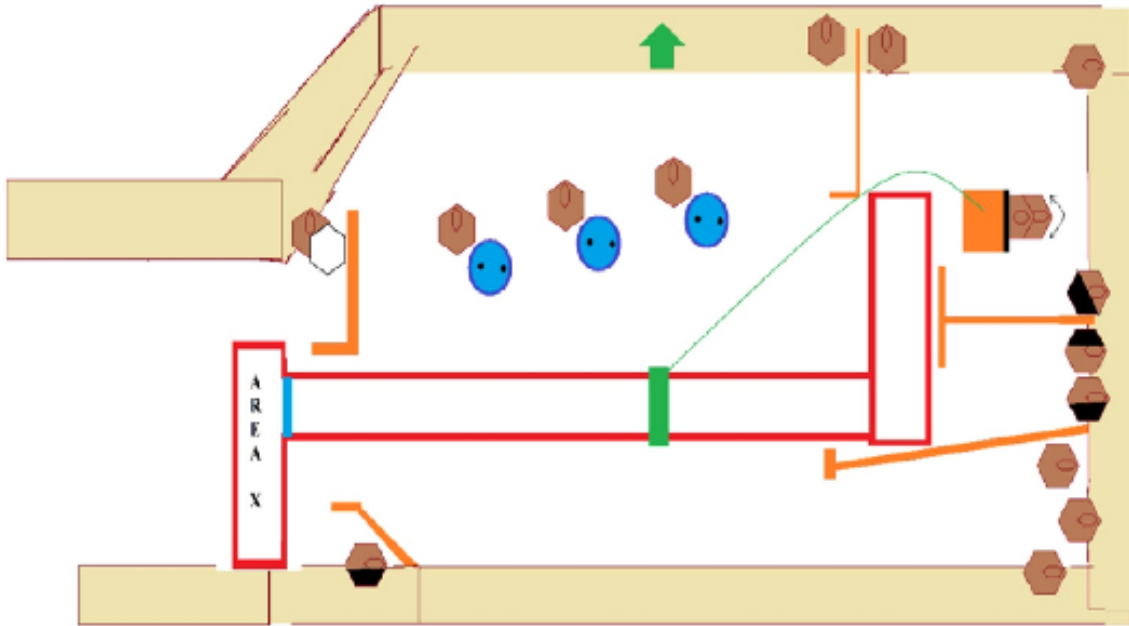
|         |                                      |            |       |
|---------|--------------------------------------|------------|-------|
| CoF     | Comstock - Short                     | Points     | 60 p  |
| Targets | 6 paper, 1 no-shoot, Total 6 targets | Min rounds | 12    |
| Firearm | Handgun                              | Match-%    | 8.33% |

|                         |                     |
|-------------------------|---------------------|
| Procedure               | On signal - Engage! |
| Starting position       | Standing            |
| Firearm ready condition |                     |
| Start on                | Audible signal      |
| Stop on                 | Last shot           |
| Penalties               |                     |
| Safety angles           |                     |
| Setup notes             |                     |

### 3. IPSC Bay1

Stage 3

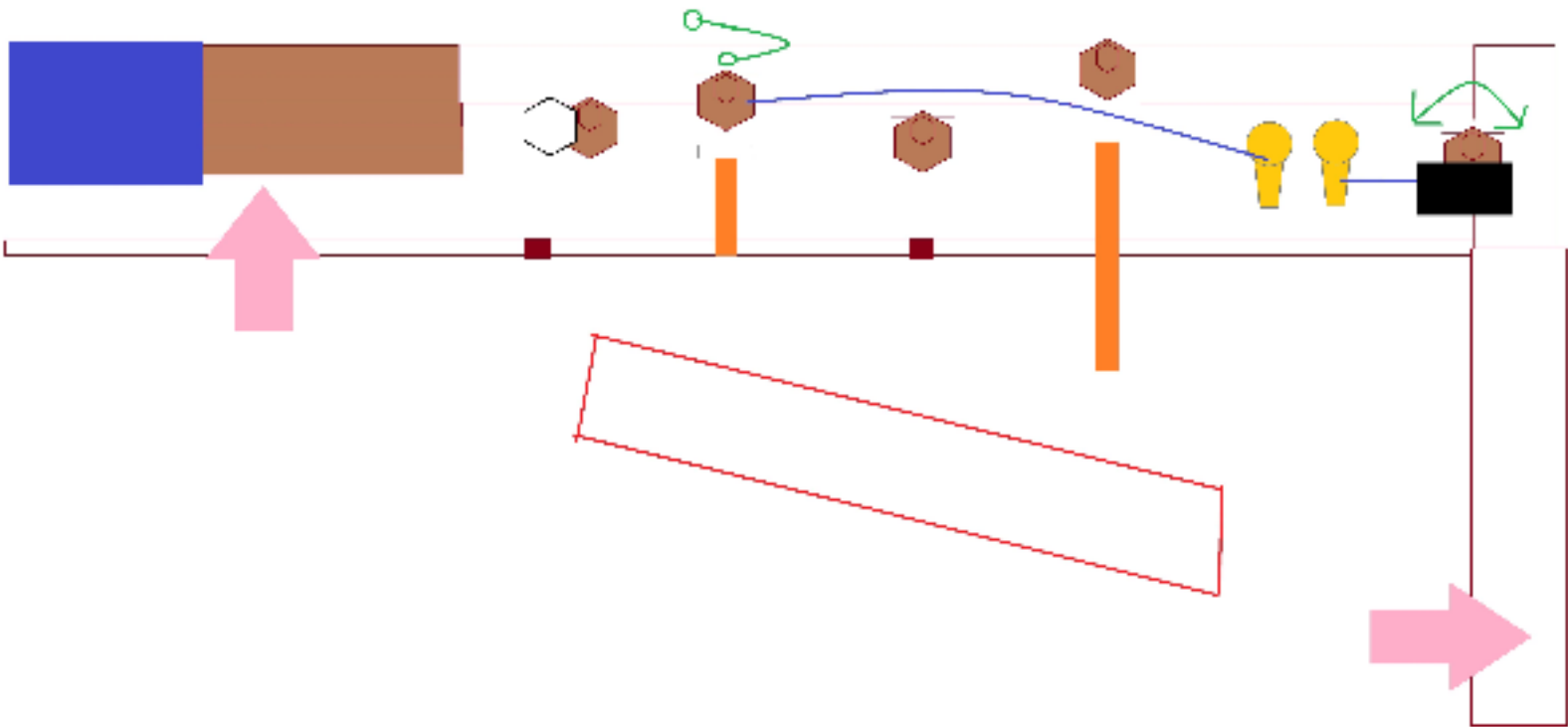
IPSC Bay 1



|         |                            |            |        |
|---------|----------------------------|------------|--------|
| CoF     | Comstock - Long            | Points     | 160 p  |
| Targets | 16 paper, Total 16 targets | Min rounds | 32     |
| Firearm | Handgun                    | Match-%    | 22.22% |

|                         |   |
|-------------------------|---|
| Procedure               | On Signal - Engage! Crossing line shown by RO - starts swinger. Targets on Swing visible at rest. |
| Starting position       | Standing in Area X  |
| Firearm ready condition |   |
| Start on                | Audible signal  |
| Stop on                 | Last shot   |
| Penalties               |   |
| Safety angles           | Shown by RO   |
| Setup notes             |   |

## 4. Left on 50m Up range



|         |                                    |            |       |
|---------|------------------------------------|------------|-------|
| CoF     | Comstock - Short                   | Points     | 60 p  |
| Targets | 5 paper, 2 popper, Total 7 targets | Min rounds | 12    |
| Firearm | Handgun                            | Match-%    | 8.33% |

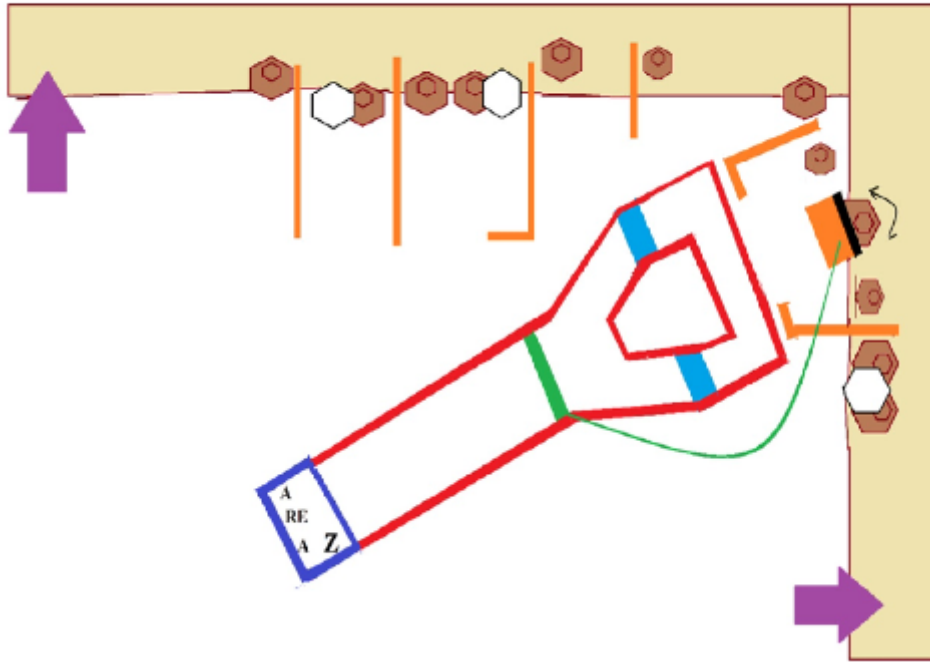
|                         |   |
|-------------------------|---|
| Procedure               | On Signal - Engage Left Popper starts Picaboo Right Popper starts Swinger. Targets visible at rest. |
| Starting position       | Standing  |
| Firearm ready condition |   |
| Start on                | Audible signal  |
| Stop on                 | Last shot   |
| Penalties               |   |
| Safety angles           | Shown by RO   |
| Setup notes             |   |



## 6. Right 50m Downrange

Stage 6

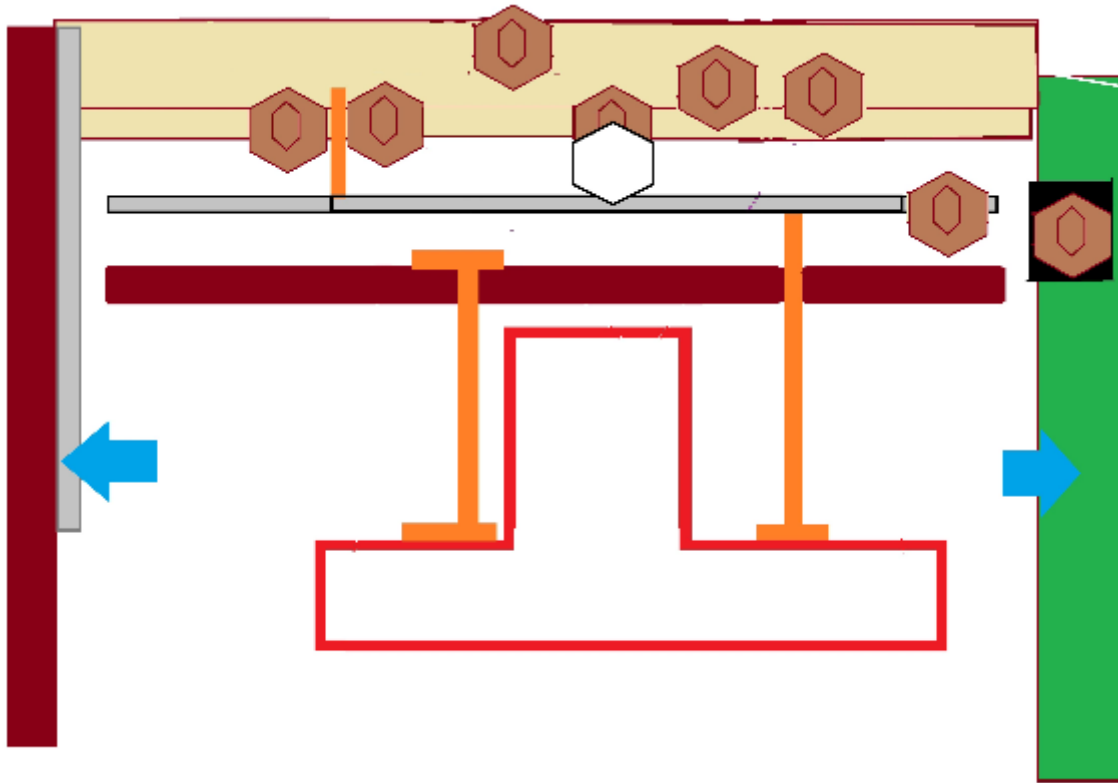
50m Downrange Right



|         |                            |            |        |
|---------|----------------------------|------------|--------|
| CoF     | Comstock - Medium          | Points     | 120 p  |
| Targets | 12 paper, Total 12 targets | Min rounds | 24     |
| Firearm | Handgun                    | Match-%    | 16.67% |

|                         |  |
|-------------------------|--|
| Procedure               | Ons signal - Engage! Swinger starts by passing line shown by RO. Visible at rest, IF... crossing Blue line - Strong hand only! ( Rule 1.1.5.3) |
| Starting position       | Standing in Area Z.  |
| Firearm ready condition |  |
| Start on                | Audible signal   |
| Stop on                 | Last shot  |
| Penalties               |  |
| Safety angles           | Shown by RO  |
| Setup notes             |  |

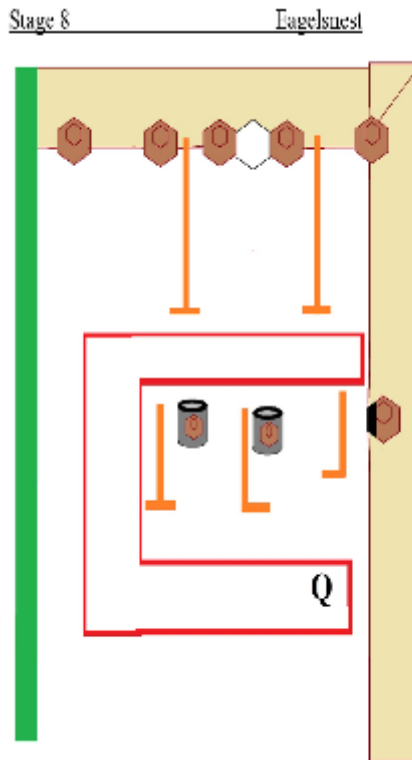
## 7. 25m Range



|         |                          |            |        |
|---------|--------------------------|------------|--------|
| CoF     | Comstock - Medium        | Points     | 80 p   |
| Targets | 8 paper, Total 8 targets | Min rounds | 16     |
| Firearm | Handgun                  | Match-%    | 11.11% |

|                         |                     |
|-------------------------|---------------------|
| Procedure               | On signal - Engage! |
| Starting position       | Standing            |
| Firearm ready condition |                     |
| Start on                | Audible signal      |
| Stop on                 | Last shot           |
| Penalties               |                     |
| Safety angles           | Shown by RO         |
| Setup notes             |                     |

# 8. Eaglesnest



|         |                          |            |        |
|---------|--------------------------|------------|--------|
| CoF     | Comstock - Medium        | Points     | 80 p   |
| Targets | 8 paper, Total 8 targets | Min rounds | 16     |
| Firearm | Handgun                  | Match-%    | 11.11% |

|                         |                     |
|-------------------------|---------------------|
| Procedure               | On signal - Engage! |
| Starting position       | Standing in Area Q  |
| Firearm ready condition |                     |
| Start on                | Audible signal      |
| Stop on                 | Last shot           |
| Penalties               |                     |
| Safety angles           |                     |
| Setup notes             |                     |