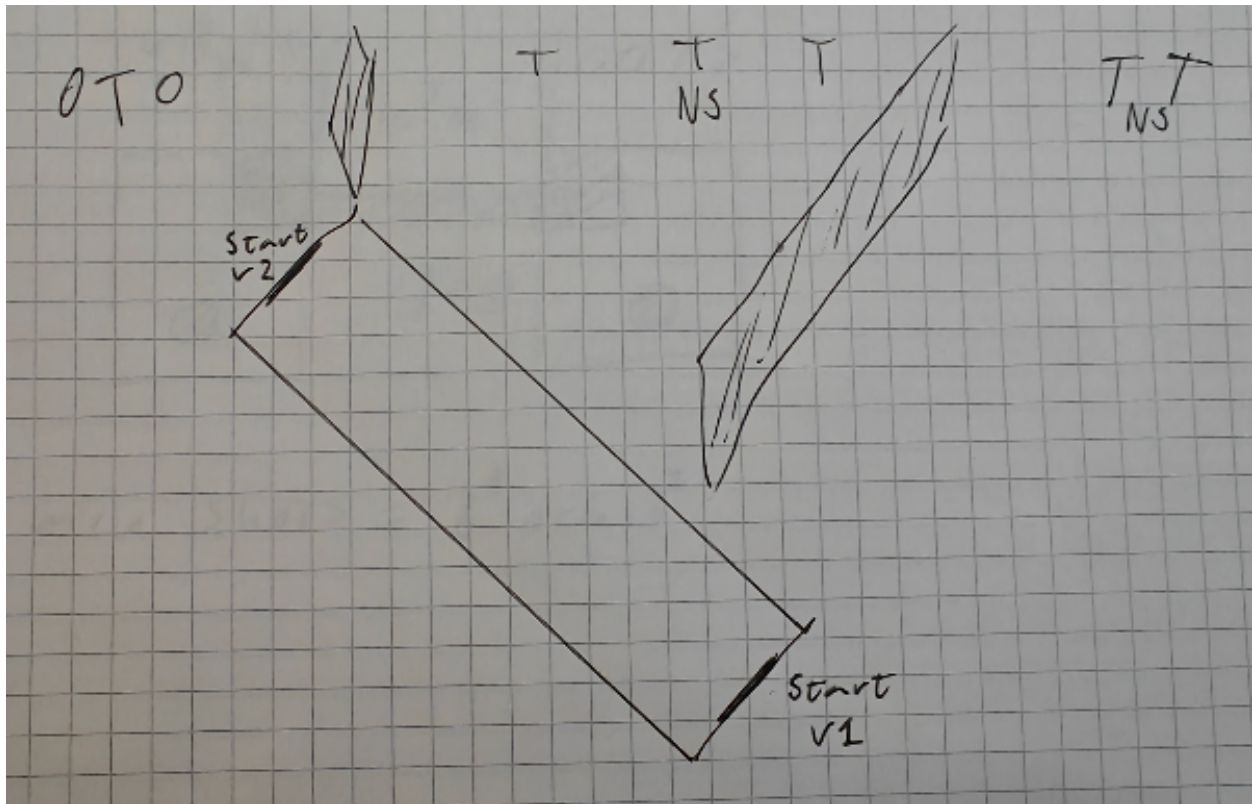


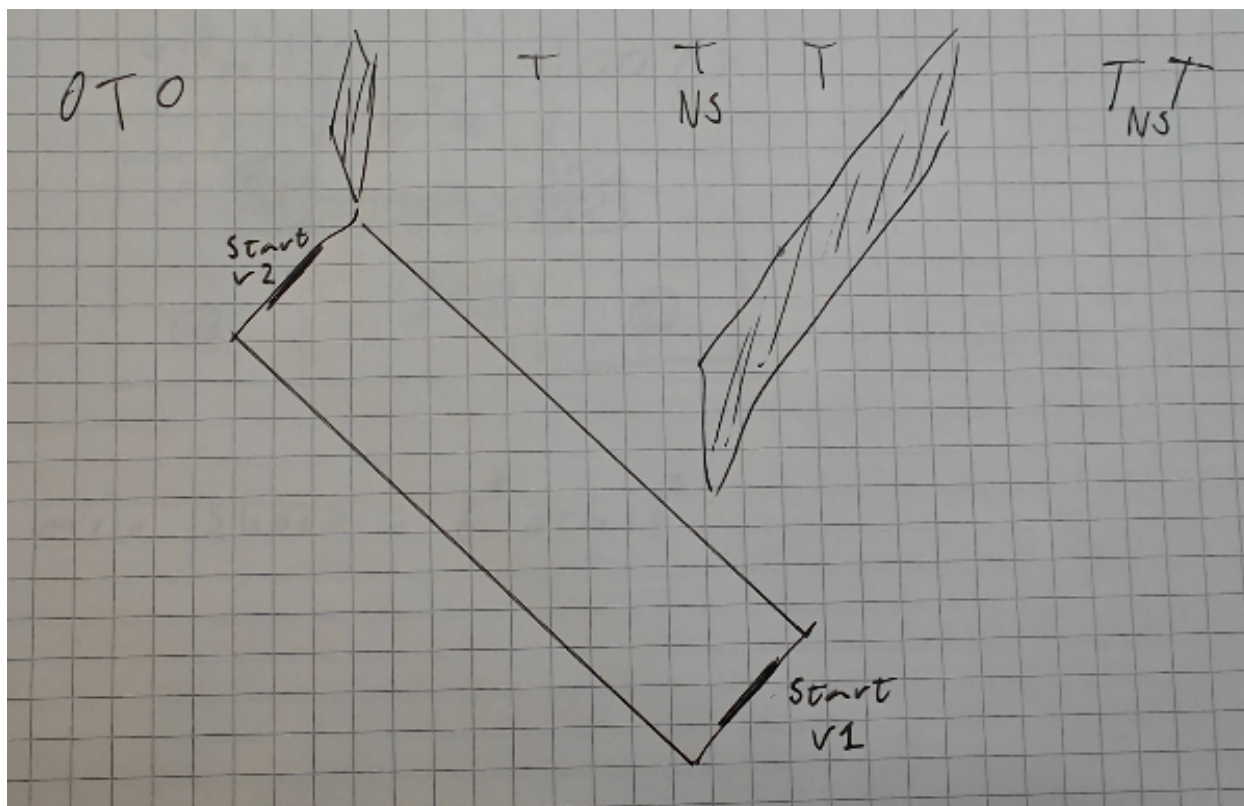
1. IPSC-vallen v1



CoF	Comstock - Medium	Points	70 p
Targets	6 paper, 2 plates, 2 no-shoot, Total 8 targets	Min rounds	14
Firearm	Handgun	Match-%	12.96%

Procedure	
Starting position	Heels touching mark
Firearm ready condition	
Start on	Audible signal
Stop on	Last shot
Penalties	As per current edition of rules
Safety angles	L/R
Setup notes	

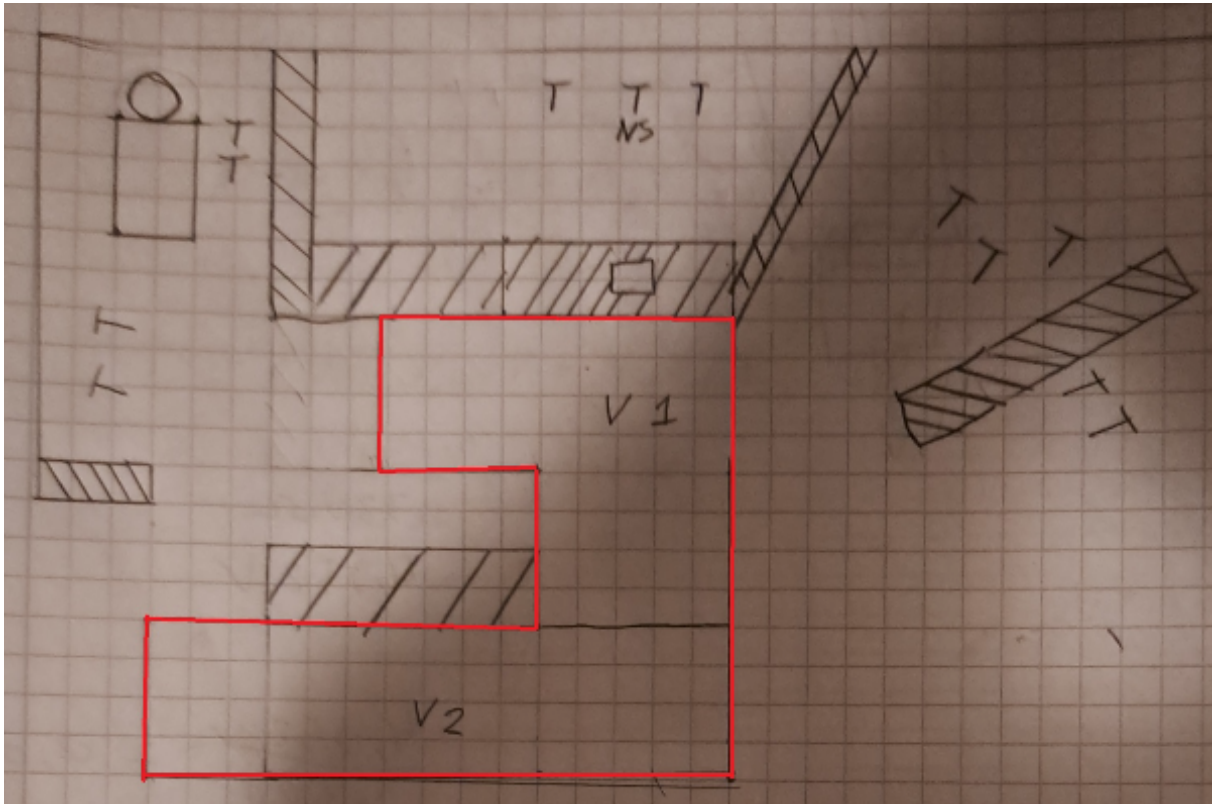
2. IPSC-vallen v2



CoF	Comstock - Medium	Points	70 p
Targets	6 paper, 2 plates, 2 no-shoot, Total 8 targets	Min rounds	14
Firearm	Handgun	Match-%	12.96%

Procedure	
Starting position	Toes touching mark
Firearm ready condition	
Start on	Audible signal
Stop on	Last shot
Penalties	As per current edition of rules
Safety angles	L/R
Setup notes	

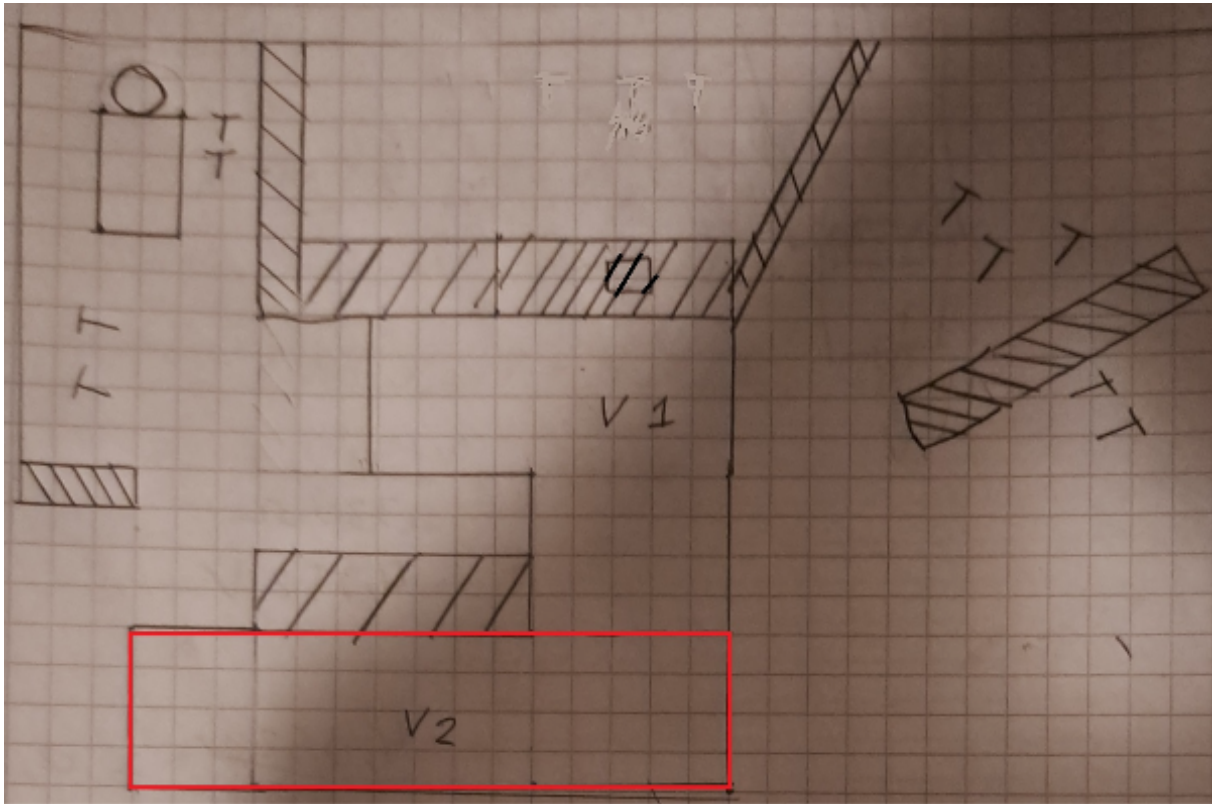
3. Nya 25an v1



CoF	Comstock - Long	Points	125 p
Targets	12 paper, 1 popper, 1 no-shoot, Total 13 targets	Min rounds	25
Firearm	Handgun	Match-%	23.15%

Procedure	
Starting position	
Firearm ready condition	
Start on	Audible signal
Stop on	Last shot
Penalties	As per current edition of rules
Safety angles	L/R
Setup notes	

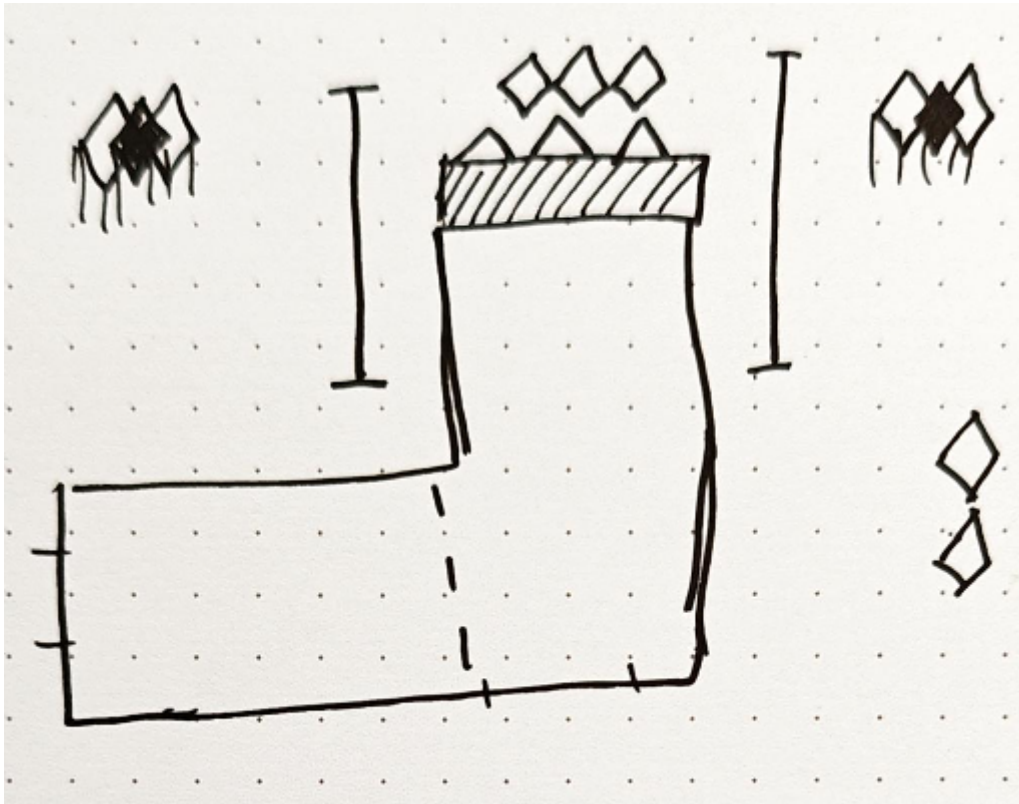
4. Nya 25an v2



CoF	Comstock - Medium	Points	95 p
Targets	9 paper, 1 popper, Total 10 targets	Min rounds	19
Firearm	Handgun	Match-%	17.59%

Procedure	
Starting position	
Firearm ready condition	
Start on	Audible signal
Stop on	Last shot
Penalties	As per current edition of rules
Safety angles	L/R
Setup notes	

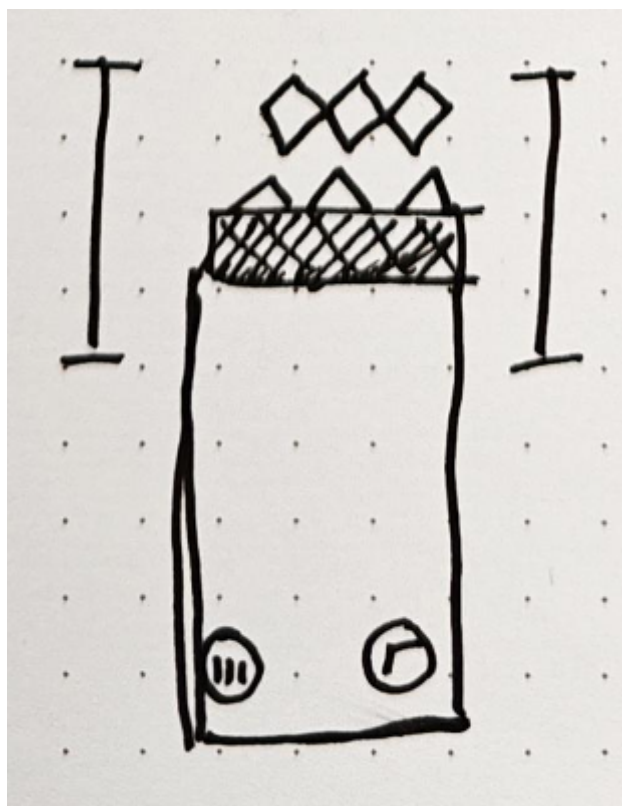
5. 100an v1



CoF	Comstock - Medium	Points	120 p
Targets	12 paper, 2 no-shoot, Total 12 targets	Min rounds	24
Firearm	Handgun	Match-%	22.22%

Procedure	
Starting position	TOES touching mark
Firearm ready condition	
Start on	Audible signal
Stop on	Last shot
Penalties	As per current edition of rules
Safety angles	L/R
Setup notes	

6. 100an v2



CoF	Comstock - Short	Points	60 p
Targets	6 paper, Total 6 targets	Min rounds	12
Firearm	Handgun	Match-%	11.11%

Procedure	
Starting position	
Firearm ready condition	Empty chamber, gun and magazines on barrel
Start on	Audible signal
Stop on	Last shot
Penalties	As per current edition of rules
Safety angles	L/R
Setup notes	