

1. A1 - Short

No image

CoF	Comstock - Short	Points	40 p
Targets	4 paper, Total 4 targets	Min rounds	8
Firearm	Handgun	Match-%	7.69%

Procedure	On signal, engage targets. All shooting must be done through the wall. Max 2 shots per opening before changing opening. Each opening may only be shot through once.
Starting position	Standing
Firearm ready condition	Loaded, holstered
Start on	Audible signal
Stop on	Last shot
Penalties	As per current edition of rules
Safety angles	L/R
Setup notes	

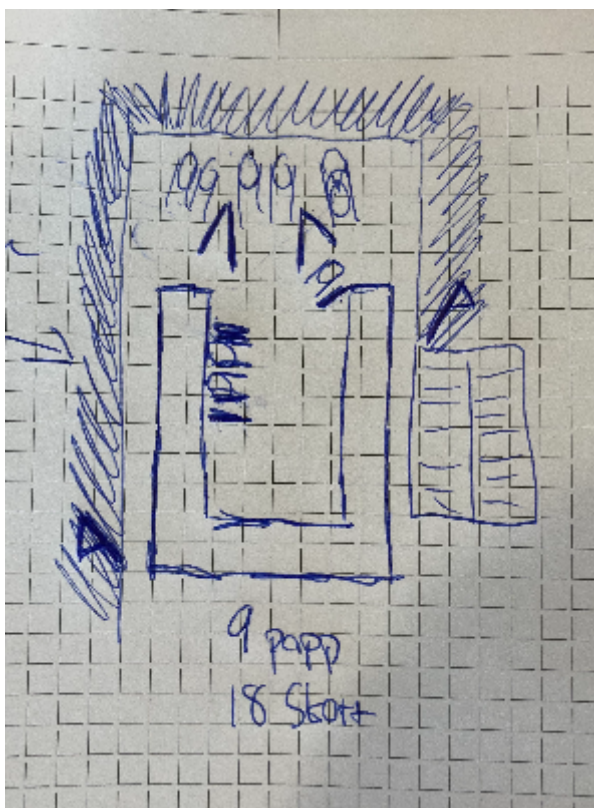
2. A2 - Medium



CoF	Comstock - Medium	Points	120 p
Targets	12 paper, 3 no-shoot, Total 12 targets	Min rounds	24
Firearm	Handgun	Match-%	23.08%

Procedure	On signal engage targets
Starting position	Standing
Firearm ready condition	Loaded, holstered
Start on	Audible signal
Stop on	Last shot
Penalties	As per current edition of rules
Safety angles	L/R
Setup notes	

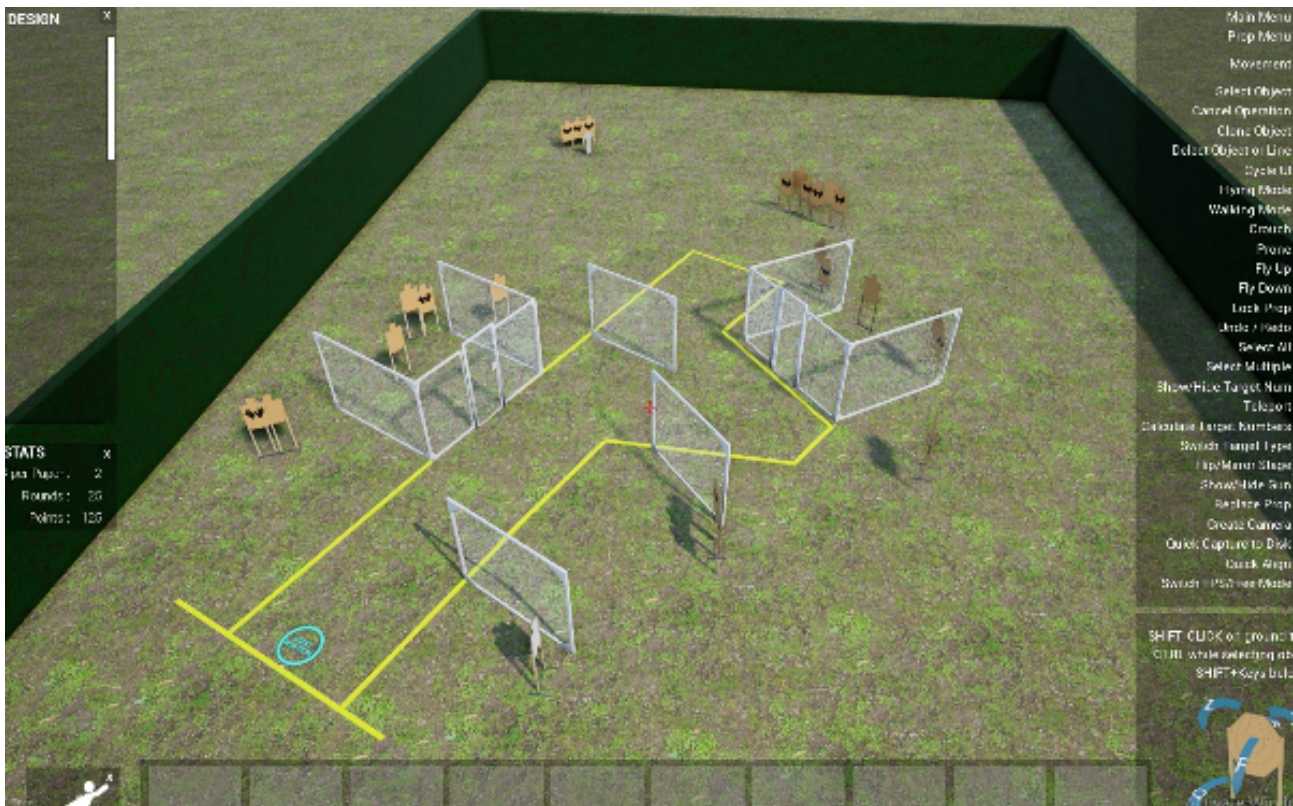
3. B - Medium



CoF	Comstock - Medium	Points	90 p
Targets	9 paper, 2 no-shoot, Total 9 targets	Min rounds	18
Firearm	Handgun	Match-%	17.31%

Procedure	On signal engage targets
Starting position	Standing
Firearm ready condition	Magazine inserted, empty chamber
Start on	Audible signal
Stop on	Last shot
Penalties	As per current edition of rules
Safety angles	L/R
Setup notes	

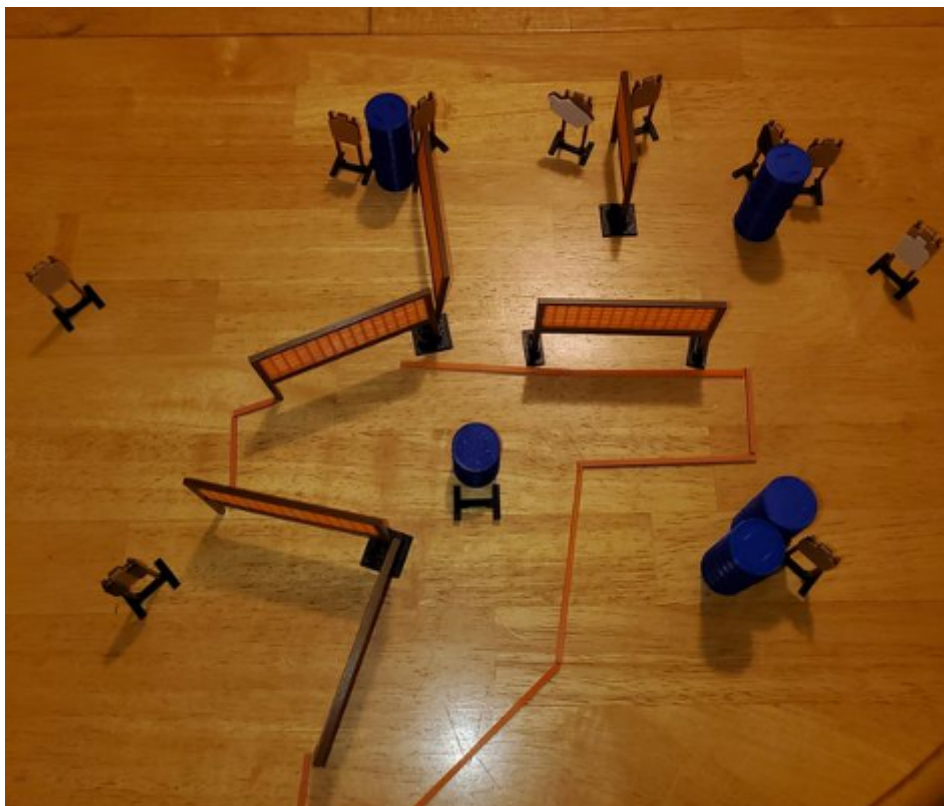
4. C - Long



CoF	Comstock - Long	Points	155 p
Targets	15 paper, 1 popper, Total 16 targets	Min rounds	31
Firearm	Handgun	Match-%	29.81%

Procedure	On signal engage targets
Starting position	Standing
Firearm ready condition	Loaded, holstered
Start on	Audible signal
Stop on	Last shot
Penalties	As per current edition of rules
Safety angles	L/R
Setup notes	

5. D - Medium



CoF	Comstock - Medium	Points	115 p
Targets	11 paper, 1 popper, Total 12 targets	Min rounds	23
Firearm	Handgun	Match-%	22.12%

Procedure	On signal engage targets
Starting position	Standing
Firearm ready condition	Unloaded laying flat on barrel muzzle down range. All magazines to be used placed on barrel.
Start on	Audible signal
Stop on	Last shot
Penalties	As per current edition of rules
Safety angles	L/R
Setup notes	