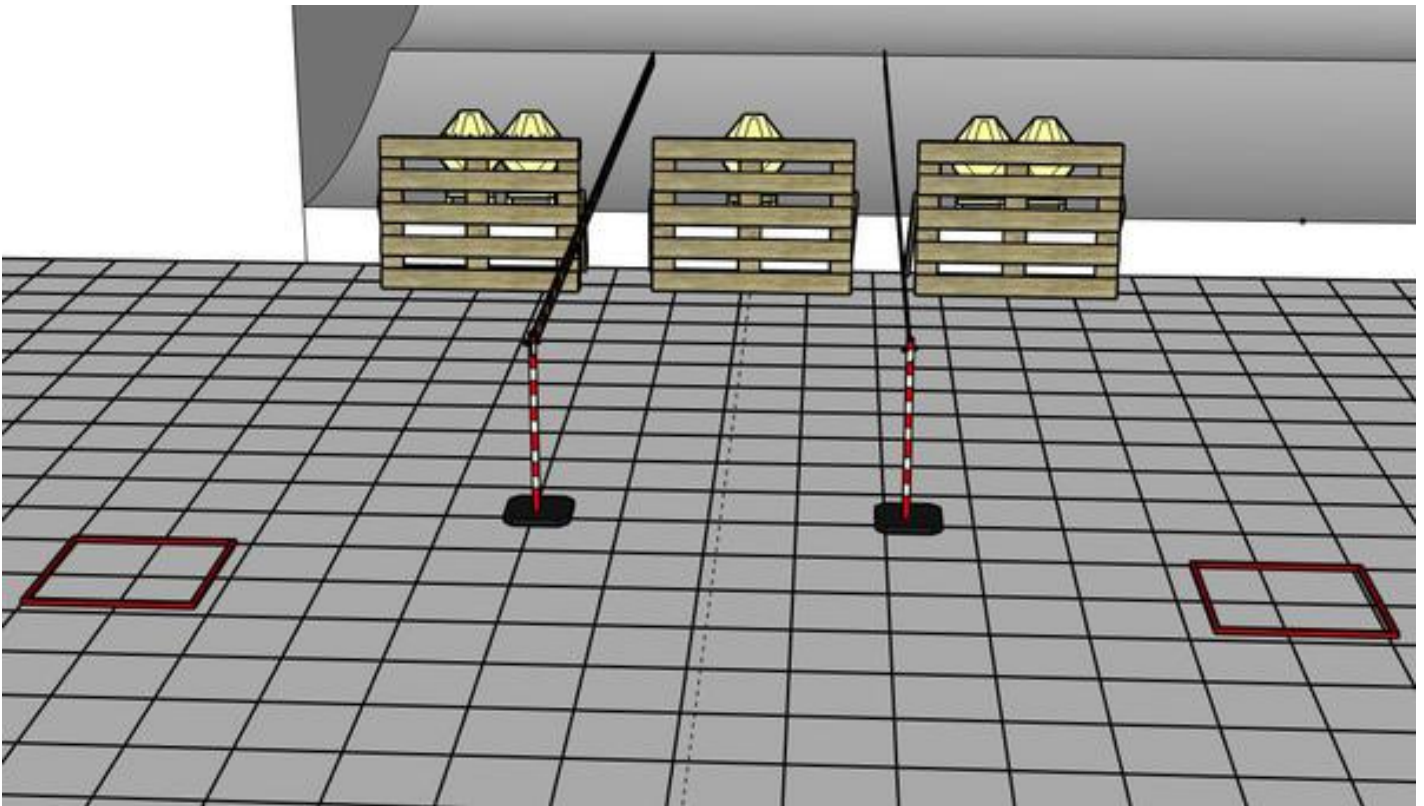


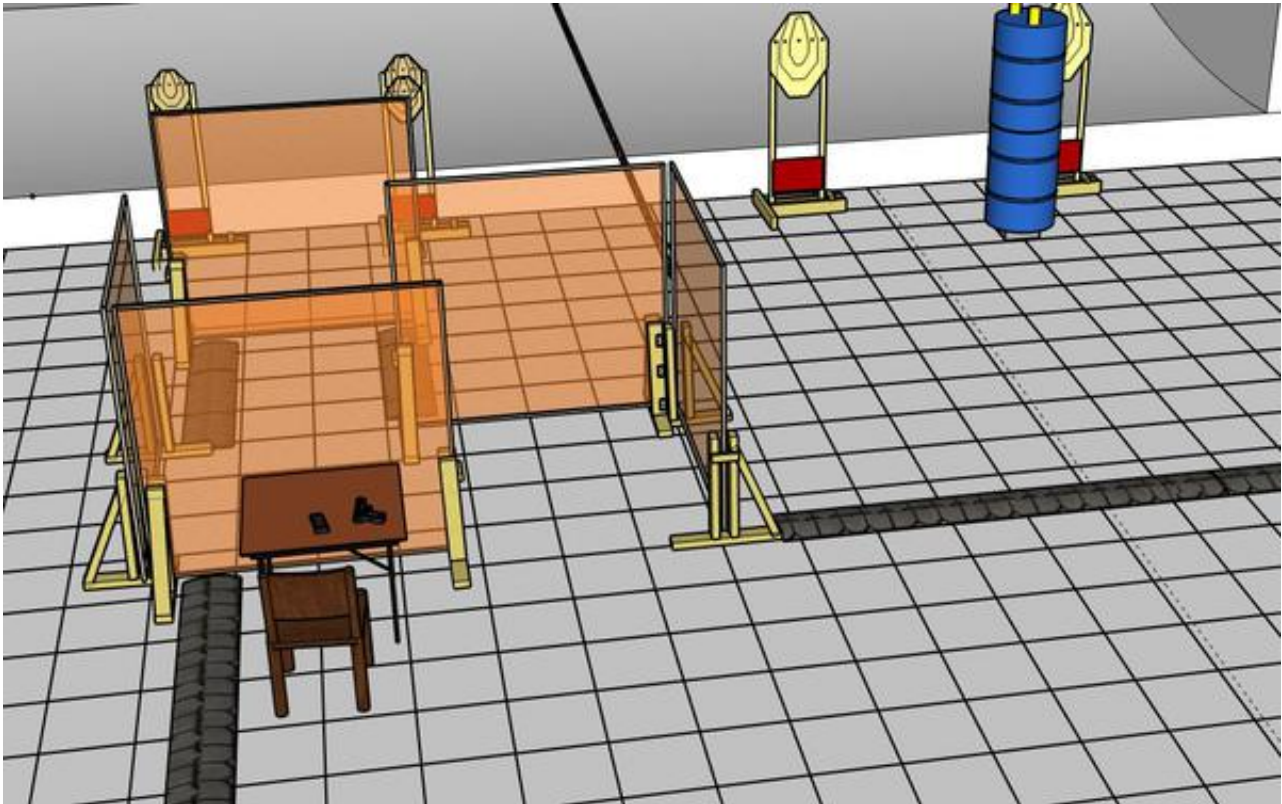
1. Three pallets



| | | | |
|---------|--------------------------|------------|--------|
| CoF | Comstock - Short | Points | 50 p |
| Targets | 5 paper, Total 5 targets | Min rounds | 10 |
| Firearm | Handgun | Match-% | 25.00% |

| | |
|-------------------------|---|
| Procedure | On signal, engage all targets when they become visible. Red/white tape=walls extending up/Down to infinity. |
| Starting position | Gun loaded, start i box A og box B |
| Firearm ready condition | Gun loaded and held in 45 degrees angle |
| Start on | Audible signal |
| Stop on | Last shot |
| Penalties | As per current edition of rules |
| Safety angles | Left: End of building, Right 90 degrees. Up: Top of berm. |
| Setup notes | |

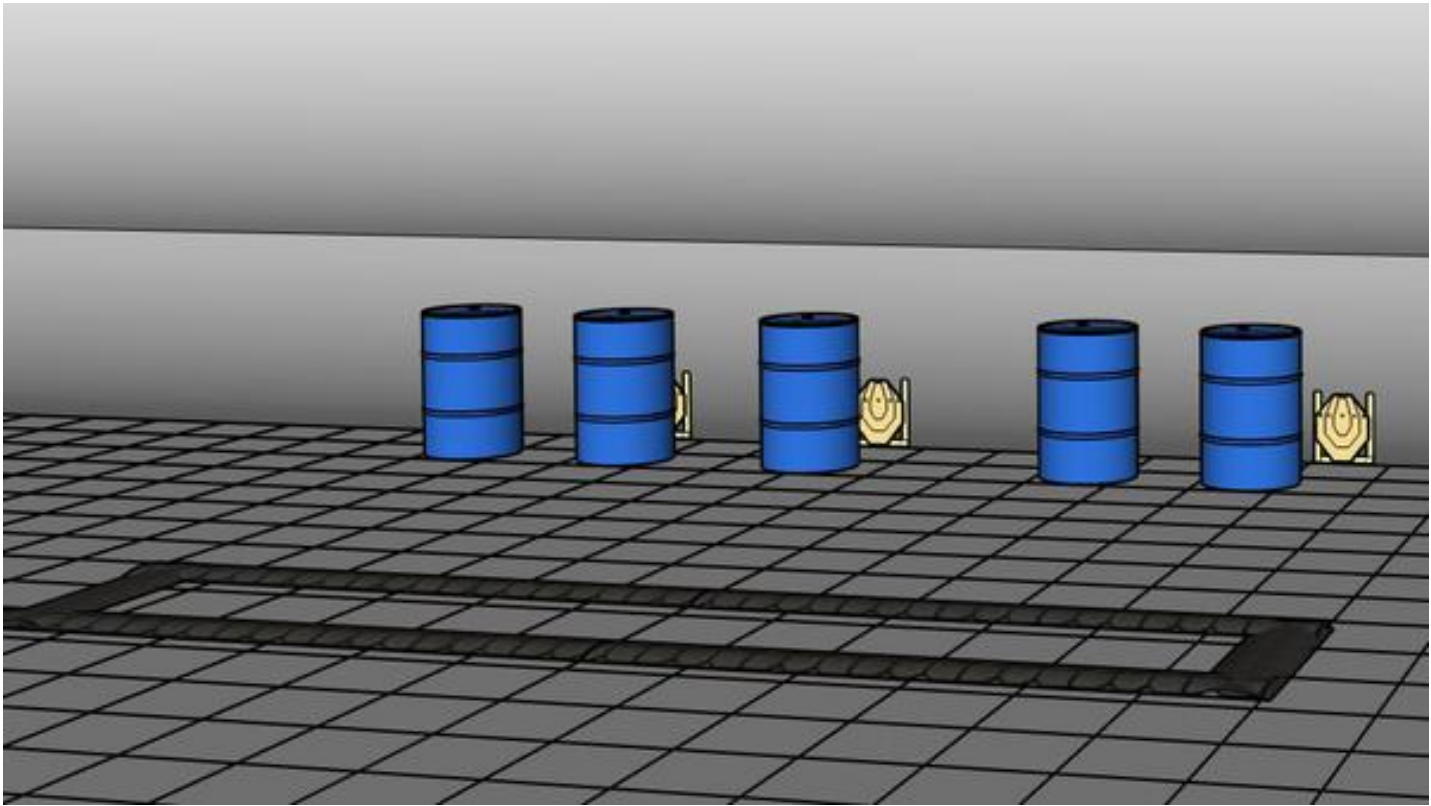
2. ZigZac



| | | | |
|---------|--------------------------|------------|--------|
| CoF | Comstock - Short | Points | 50 p |
| Targets | 5 paper, Total 5 targets | Min rounds | 10 |
| Firearm | Handgun | Match-% | 25.00% |

| | |
|-------------------------|--|
| Procedure | On signal, engage all targets as they become visible within the demarcated area. Tiretreads on ground=faultlines. red/white tape=walls extending up/Down to infinity |
| Starting position | Sitting relaxed on chair |
| Firearm ready condition | Firearm empty, closed action. All magazines to be used must be placed on table. |
| Start on | Audible signal |
| Stop on | Last shot |
| Penalties | As per current edition of rules |
| Safety angles | Left=End of building. Right=90 degrees. Up=Top of berm. |
| Setup notes | |

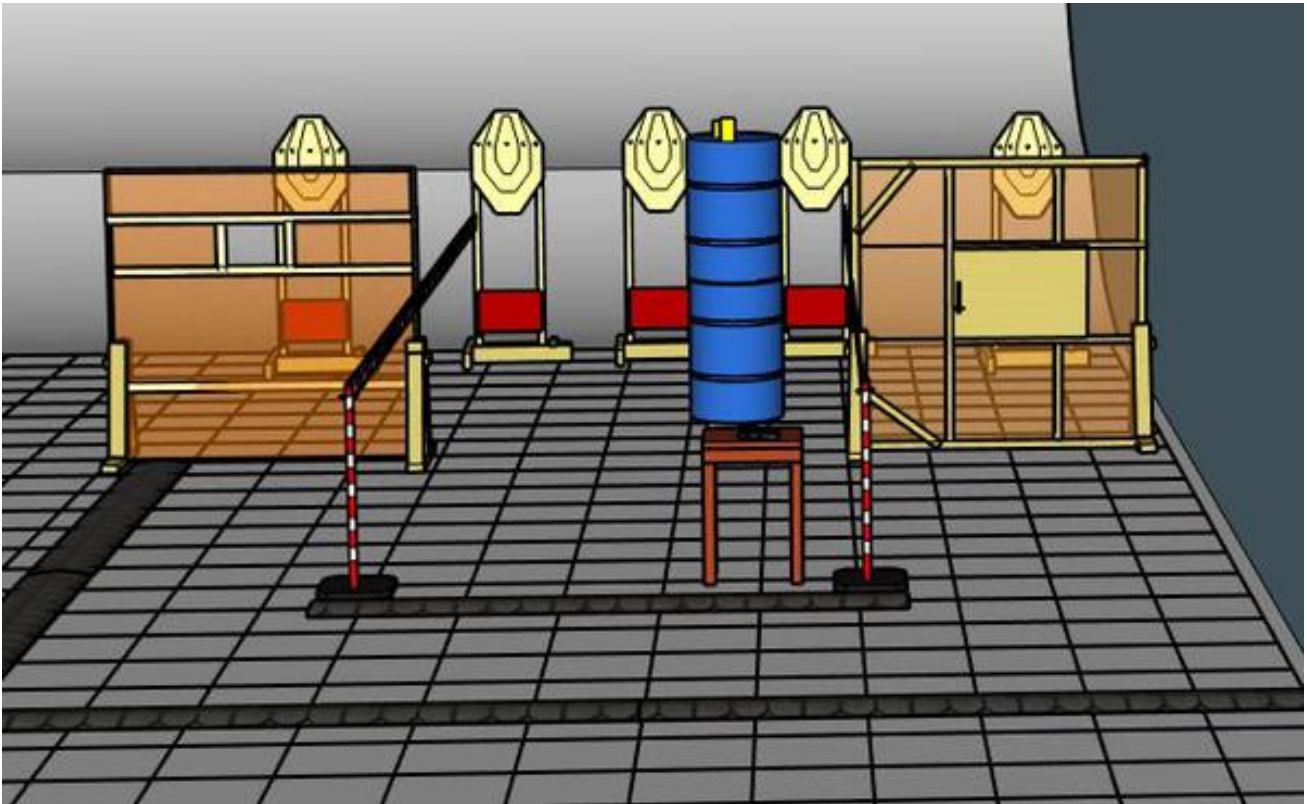
3. Barrel run



| | | | |
|---------|--------------------------|------------|--------|
| CoF | Comstock - Short | Points | 50 p |
| Targets | 5 paper, Total 5 targets | Min rounds | 10 |
| Firearm | Handgun | Match-% | 25.00% |

| | |
|-------------------------|---|
| Procedure | On signal, engage all targets as they become visible within the demarcated area. Tiretreads on ground=faultlines. |
| Starting position | Gun loaded, held in 45 degrees angle. Heels touching mark. |
| Firearm ready condition | Firearm loaded. |
| Start on | Audible signal |
| Stop on | Last shot |
| Penalties | As per current edition of rules |
| Safety angles | L/R= 90 degrees. UP=top of berm. |
| Setup notes | |

4. Hatch or window first?



| | | | |
|---------|--------------------------|------------|--------|
| CoF | Comstock - Short | Points | 50 p |
| Targets | 5 paper, Total 5 targets | Min rounds | 10 |
| Firearm | Handgun | Match-% | 25.00% |

| | |
|-------------------------|---|
| Procedure | On signal, engage all targets as they become visible within the demarcated area. Tiretreads on ground=faultlines. Red/white tape=walls extending up/Down to infinity. |
| Starting position | Heels touching mark on tiretread. |
| Firearm ready condition | Gun loaded on table |
| Start on | Audible signal |
| Stop on | Last shot |
| Penalties | As per current edition of rules |
| Safety angles | L/R=90 degrees, Up=top of berm |
| Setup notes | |